

LV HRC fuse element, NH2, In: 200 A, gG, Un AC: 500 V, Un DC: 440 V, Front indicator, live grip lugs



Model	
Product brand name	SETRON
Product designation	LV HRC fuse link
Design of the product	With blade contacts
Design of an identification indicator	Front indicators
Design of the switching contact	Non-corroding, silver-plated
Design of the fuse link	LV HRC fuse link
General technical data	
Size of fuse system / acc. to DIN EN 60269-1	NH2
Operating class of the fuse link	gG
circuit-breaker / Design	3NA3
Type of voltage	AC/DC
Current / at AC / rated value	200 A
Supply voltage	
• at AC / rated value	500 V
• at DC	440 V
Protection class	
Protection class IP	IP20, with connected conductors

## Switching capacity

### Switching capacity current

- at DC / acc. to IEC 60947-2 / rated value 25 kA
- acc. to IEC 60947-2 / rated value 120 kA

## Dissipation

Power loss [W]	14.9 W
Power loss [W] / for rated value of the current / at AC / in hot operating state / per pole	14.9 W

## Current

Tripping residual / rated value / derated current / at 40 Cel	190 A
Diken-export / Let-through energy	DE_3NA_2_500_gG_200

## Mechanical Design

Width <ul style="list-style-type: none"><li>• of the enclosure</li></ul>	47.2 mm
Mounting position	Any, preferably vertical
Net weight	465 g

## Environmental conditions

Ambient temperature <ul style="list-style-type: none"><li>• during storage</li></ul>	-5 ... +40 °C Air humidity 90% at 20 °C
Environmental category	-20 to +50 at 95% relative humidity

## Certificates

Reference code <ul style="list-style-type: none"><li>• acc. to DIN EN 61346-2</li><li>• acc. to DIN EN 81346-2</li></ul>	F F
--------------------------------------------------------------------------------------------------------------------------	--------

### General Product Approval

### Declaration of Conformity

### Test Certificates



CCC



CSA



KEMA



VDE



EG-Konf.

[Type Test Certificates/Test Report](#)

### Test Certificates

### Shipping Approval

### other

[Special Test Certificate](#)

[Miscellaneous](#)



GL

[Environmental Conformations](#)

[Miscellaneous](#)

## Further information

**Information- and Downloadcenter (Catalogs, Brochures,...)**

<http://www.siemens.com/lowvoltage/catalogs>

**Industry Mall (Online ordering system)**

<https://mall.industry.siemens.com/mall/en/en/Catalog/product?mlfb=3NA3240>

**Service&Support (Manuals, Certificates, Characteristics, FAQs,...)**

<https://support.industry.siemens.com/cs/ww/en/ps/3NA3240>

**Image database (product images, 2D dimension drawings, 3D models, device circuit diagrams, ...)**

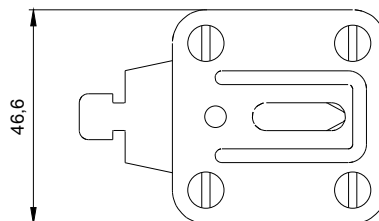
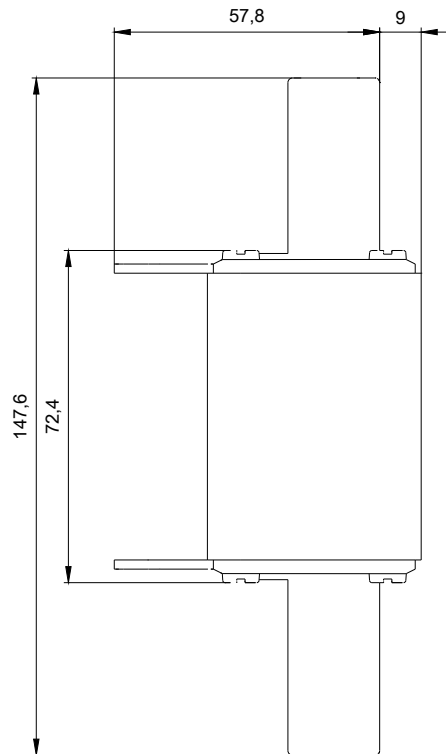
[http://www.automation.siemens.com/bilddb/cax\\_en.aspx?mlfb=3NA3240](http://www.automation.siemens.com/bilddb/cax_en.aspx?mlfb=3NA3240)

**CAX-Online-Generator**

<http://www.siemens.com/cax>

**Tender specifications**

<http://www.siemens.com/specifications>



1

-F1



2

