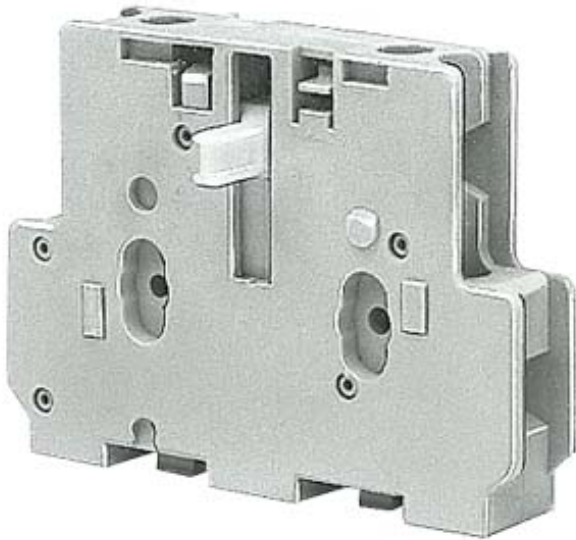


Auxiliary switch block, for size 3...12 2nd auxiliary switch block left or right



General technical data	
Suitability for use	Contact relay and power contactor
Protection class IP on the front	IP20
Ambient temperature	
• during storage	-55 ... +80 °C
• during operation	-25 ... +55 °C
Mechanical service life (switching cycles) typical	10 000 000
Insulation voltage with degree of pollution 3 rated value	690 V
Surge voltage resistance rated value	6 kV
Auxiliary circuit	
Number of NC contacts for auxiliary contacts	
• instantaneous contact	1
• lagging switching	0
Number of NO contacts for auxiliary contacts	
• instantaneous contact	1
• leading contact	0
Operating current of auxiliary contacts at AC-12	

<ul style="list-style-type: none"> • at 24 V • at 230 V • maximum 	<p>10 A</p> <p>10 A</p> <p>10 A</p>
Operating current <ul style="list-style-type: none"> • of auxiliary contacts <ul style="list-style-type: none"> — at AC-14 — at 125 V — at AC-15 — at 24 V — at 230 V — at 400 V • at AC-15 at 690 V rated value 	<p>10 A</p> <p>10 A</p> <p>5.6 A</p> <p>3.6 A</p> <p>2.3 A</p>
Operating current <ul style="list-style-type: none"> • of auxiliary contacts at DC-12 <ul style="list-style-type: none"> — at 24 V — at 110 V — at 220 V 	<p>10 A</p> <p>3.2 A</p> <p>0.9 A</p>
Operating current <ul style="list-style-type: none"> • of auxiliary contacts at DC-13 <ul style="list-style-type: none"> — at 24 V — at 60 V — at 110 V — at 220 V 	<p>10 A</p> <p>5 A</p> <p>1.14 A</p> <p>0.48 A</p>

Installation/ mounting/ dimensions	
Mounting type	snap-on mounting
Width	12 mm
Height	70 mm
Depth	51.5 mm

Connections/Terminals	
Type of electrical connection for auxiliary and control current circuit	screw-type terminals
Type of connectable conductor cross-sections <ul style="list-style-type: none"> • for auxiliary contacts <ul style="list-style-type: none"> — finely stranded — with core end processing • at AWG conductors for auxiliary contacts 	<p>2x (0.5 ... 1.0 mm²), 2x (0.75 ... 2.5 mm²)</p> <p>2x (18 ... 12)</p>

Safety related data	
Product function positively driven operation acc. to IEC 60947-5-1	Yes

Certificates/approvals	
------------------------	--

General Product Approval	Functional Safety/Safety of Machinery
--------------------------	---------------------------------------



CCC



CSA



UL

[KC](#)



[Type Examination Certificate](#)

Test Certificates	other
-------------------	-------

[Special Test Certificate](#)

[Confirmation](#)

Further information

Information- and Downloadcenter (Catalogs, Brochures,...)

<http://www.siemens.com/industrial-controls/catalogs>

Industry Mall (Online ordering system)

<https://mall.industry.siemens.com/mall/en/en/Catalog/product?mlfb=3TY7561-1KA00>

Cax online generator

<http://support.automation.siemens.com/WW/CAXorder/default.aspx?lang=en&mlfb=3TY7561-1KA00>

Service&Support (Manuals, Certificates, Characteristics, FAQs,...)

<https://support.industry.siemens.com/cs/ww/en/ps/3TY7561-1KA00>

Image database (product images, 2D dimension drawings, 3D models, device circuit diagrams, EPLAN macros, ...)

http://www.automation.siemens.com/bilddb/cax_de.aspx?mlfb=3TY7561-1KA00&lang=en

last modified:

07/25/2019