

Residual current operated circuit breaker, 4-pole, Type AC, In: 40 A, 300 mA, Un AC: 400 V



Model	
Product brand name	SENTRON
Product designation	RCCB
Design of the product	Instantaneous
General technical data	
Number of poles	4
Size of installation devices / acc. to DIN 43880	1
Protection against electrical shock	Finger and back-of-hand safe
Short-circuit current rating	10 kA
circuit-breaker / Design	5SV4
Mechanical service life (switching cycles) / typical	10 000
Switching function / short-term delayed	No
Overvoltage category	III
Supply voltage	
Current / at AC / rated value	40 A
<ul style="list-style-type: none"> <li>Supply voltage / at AC / rated value</li> <li>Supply voltage / for testing equipment / minimum</li> </ul>	230/400 V 100 V

• rated value

50 Hz

### Protection class

Protection class IP

IP20, if the distribution board is installed, with connected conductors

### Switching capacity

Switching capacity current / according to IEC 61008-1 / rated value

0.8 kA

### Dissipation

Power loss [W] / for rated value of the current / at AC / in hot operating state / per pole

2 W

### Current

Tripping residual current / rated value

300 mA

Tripping residual / rated value / derated current

• at 40 Cel	40 A
• at 45 Cel	38.1 A
• at 50 Cel	35.59 A
• at 55 Cel	32.29 A
• at 60 Cel	28.19 A
• at 65 Cel	23.3 A
• at 70 Cel	17.62 A

Type of fault current

AC

I<sub>2t</sub>-value / permissible

58 000 A<sup>2</sup>·s

### Product details

Product feature / silicon-free

Yes

Product extension / can be installed / supplementary devices

Yes

### Connections

Connectable conductor cross-section

• solid	0.75 ... 35 mm <sup>2</sup>
• stranded	0.75 ... 35 mm <sup>2</sup>

Tightening torque / with screw-type terminals

2.5 ... 3 N·m

Position / of power supply cord

top or bottom

### Mechanical Design

Height

90 mm

Width

72 mm

Depth

70 mm

Installation depth

70 mm

Number of width units

4

Mounting type

DIN rail (REG)

Mounting position

any

Net weight	350 g
------------	-------

### Environmental conditions

Ambient temperature	-25 ... +45 °C
• during storage	-40 ... +75 °C

### Certificates

Reference code	F
• acc. to DIN EN 61346-2	F
• acc. to DIN EN 81346-2	F

General Product Approval	Declaration of Conformity	other	Railway
--------------------------	---------------------------	-------	---------



CCC



IMQ

[Miscellaneous](#)



EG-Konf.

[Miscellaneous](#)

[Vibration and Shock](#)

### Railway

[Confirmation](#)

### Further information

**Information- and Downloadcenter (Catalogs, Brochures,...)**

<http://www.siemens.com/lowvoltage/catalogs>

**Industry Mall (Online ordering system)**

<https://mall.industry.siemens.com/mall/en/en/Catalog/product?mlfb=5SV4644-0>

**Service&Support (Manuals, Certificates, Characteristics, FAQs,...)**

<https://support.industry.siemens.com/cs/ww/en/ps/5SV4644-0>

**Image database (product images, 2D dimension drawings, 3D models, device circuit diagrams, ...)**

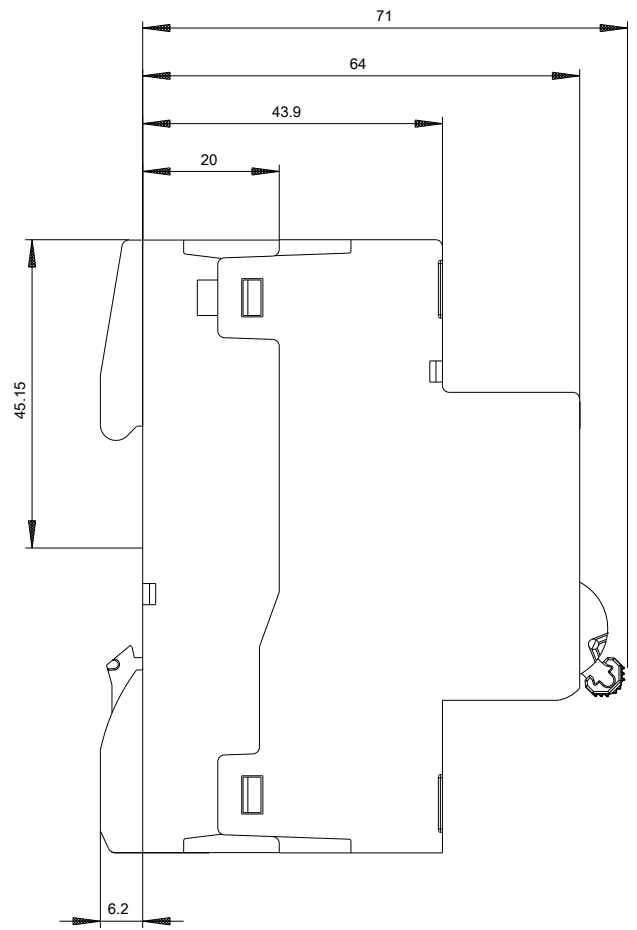
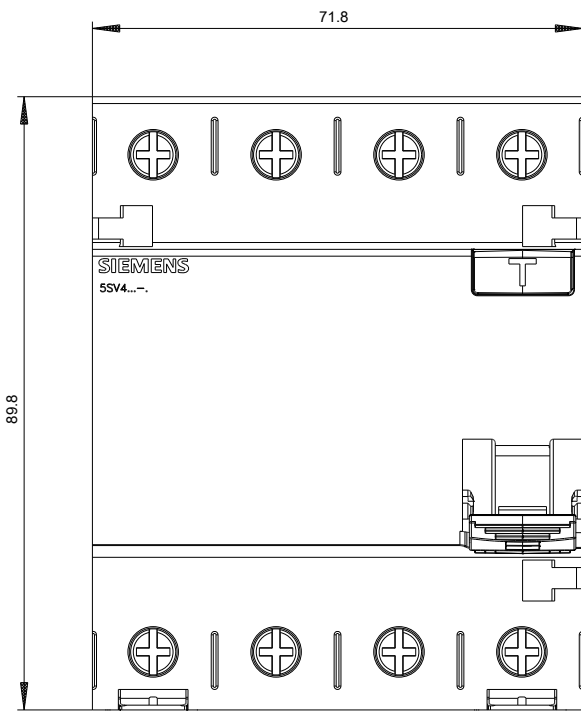
[http://www.automation.siemens.com/bilddb/cax\\_en.aspx?mlfb=5SV4644-0](http://www.automation.siemens.com/bilddb/cax_en.aspx?mlfb=5SV4644-0)

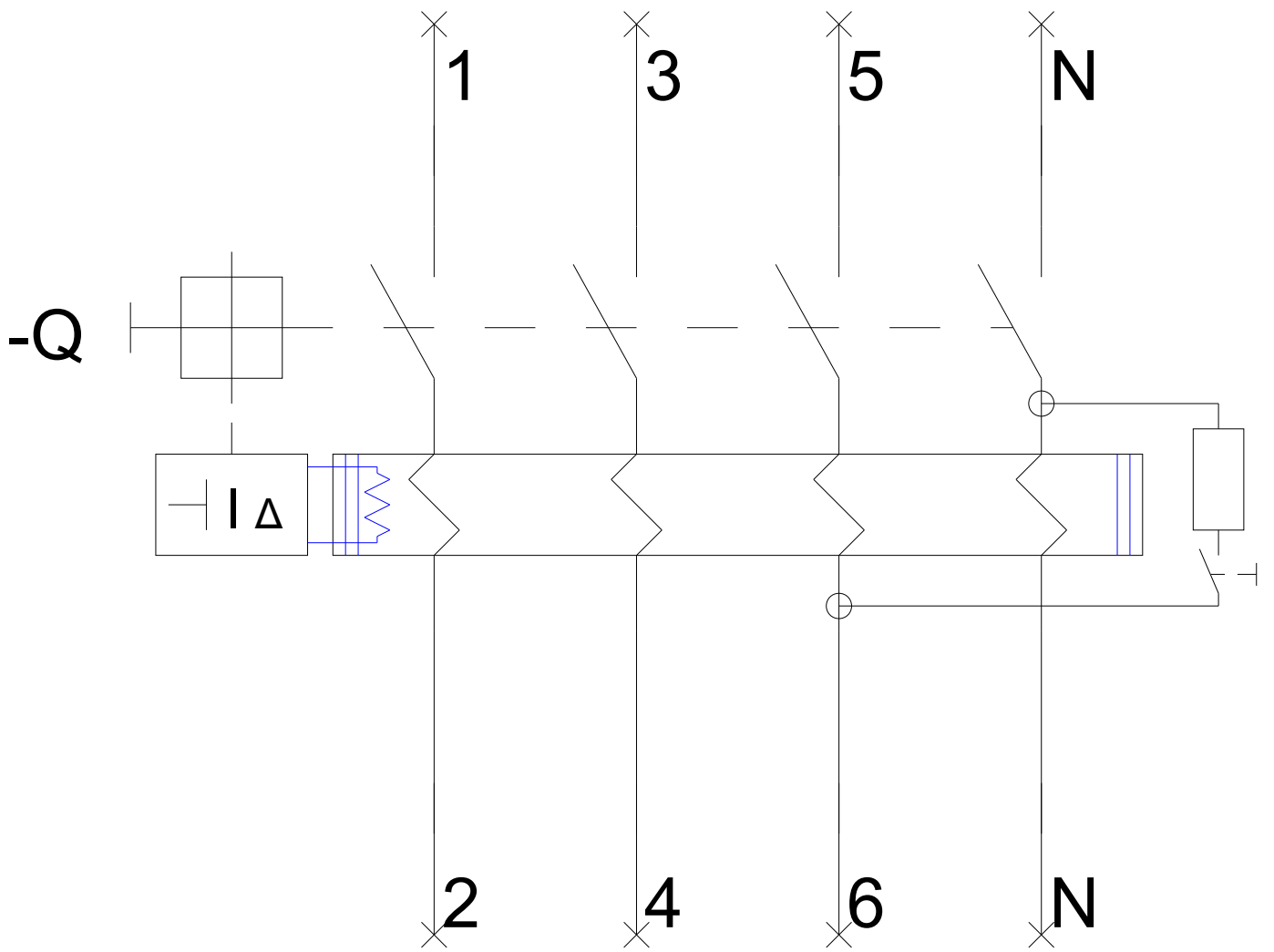
**CAX-Online-Generator**

<http://www.siemens.com/cax>

**Tender specifications**

<http://www.siemens.com/specifications>





-CB

